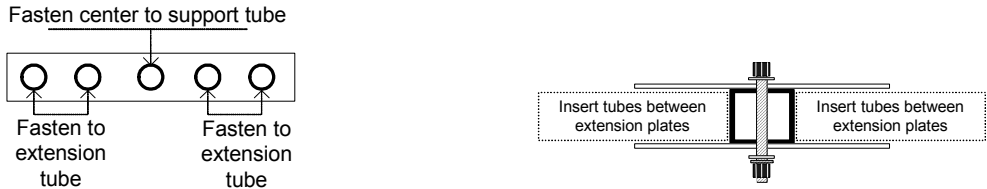


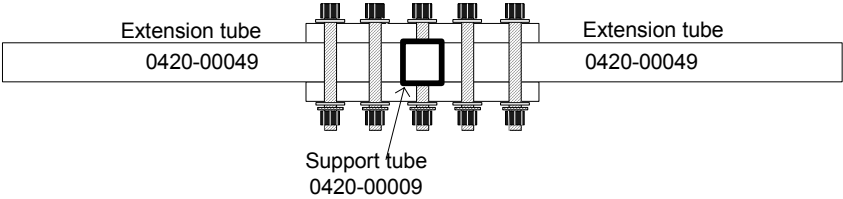
**Installation instructions for BOSS-GS-8 Extension tube kit:**

**Tools required:** 7/16 inch box-end wrench.

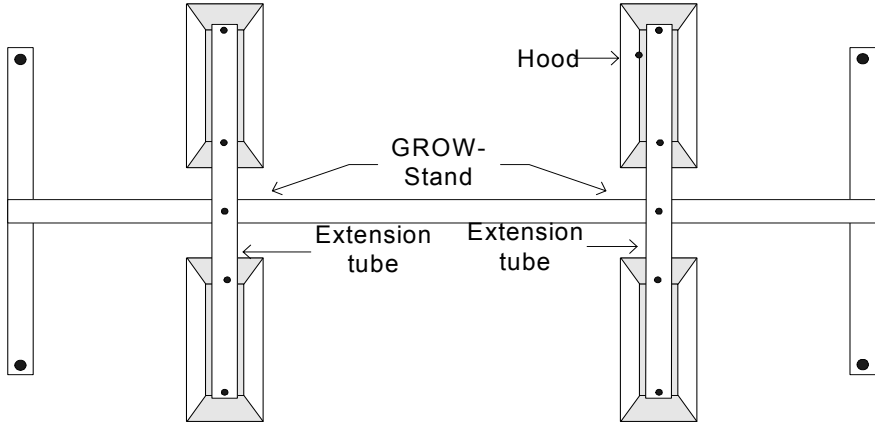
- 1. The extension plates (x2) are bolted to the support tube using the center most hole and attached to the top of the GROW-Stand support tube.



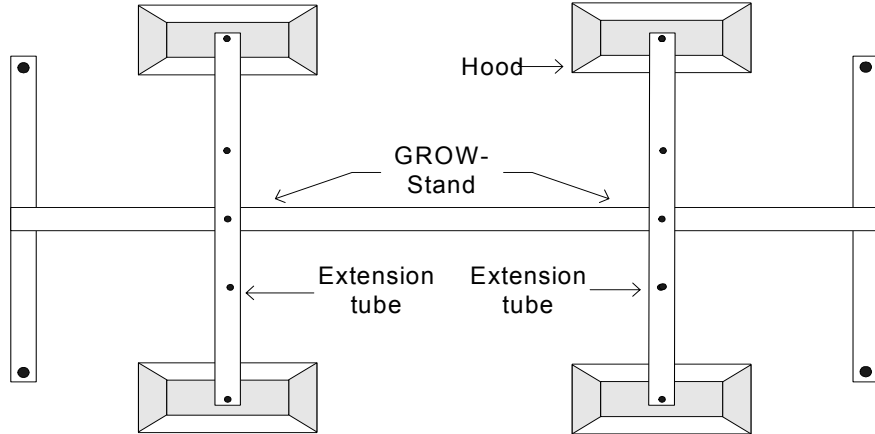
- 2. Insert the support tubes (x2) between the plates and aligning the mount holes. Place the nuts, bolts, and washers to the mount holes and tighten to approx. 50 inch pounds.



- 3. The hoods can be mounted to the extensions tubes along the long axis of the tubes:



- 4. Or the extension tubes can be complemented with Swivel-Sticks (not included in this kit) to position the hoods perpendicular to the long axis of the extension tubes for greater distances between the hoods:



**Note:** Keep in mind that the extension tubes can be mounted to any of the several holes in the GROW-Stand support tube to optimize hood distances as well.